



RCRELIABLE CABIN



Tried, Tested & Trusted

MANUFACTURERS OF PORTABLE & CUSTOMIZE CABIN

GST NO.: 27BARPC0152K1ZP



"We as Manufacturer with Immense Experience of over Decades, Our Portable Cabins are Manufactured and Equipped with such Features, So that it can Meet Customer Requirement Even at Remote and isolated Sites, which can be used as Living Module or Office Units, Commercial Units, Toilet and Shower Units."

"Our Portable Cabin are Highly Durable with Estimated life Span of 15 Year."

"Our Cabins are Supplied Across all over India."

"Our Motto-Business with Ethics and Morale Prevails Anywhere And Anytime"

Our Branches : MUMBAI | PUNE | HYDRABAD | AHMDABAD

ABOUT US

From Owner's Desk

Established in the year 2014, we, "Reliable Cabin", are a well-known Manufacturer of an exclusive range of Portable Cabins, Portable Offices, Portable Security Cabins, Portable Toilets, and many more. The offered products are manufactured using high-quality raw material and sophisticated machines under the guidance of skilled professionals in adherence to national quality standards. These products are highly appreciated among clients for their special features like attractive design, durability, easy to maintain, weather resistance and durability. Further, we offer these products in various specifications as per the specific needs of our valuable clients.

Set up and assisted by our mentor, "Mr. Rinku Omprakash Choubey", we have been able to build a huge client base. With help of his Knowledge and Truly Unparalleled Integrity in this Industry we are able to serve our clients in the best possible way. Strict quality observance and control has helped us secure the trust of multiple customers.

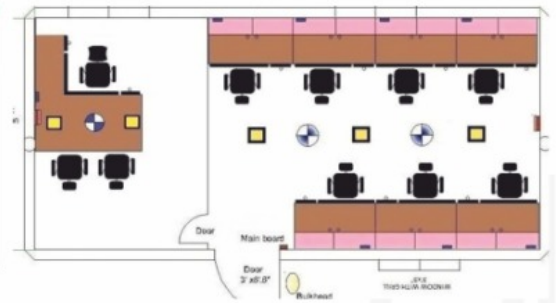
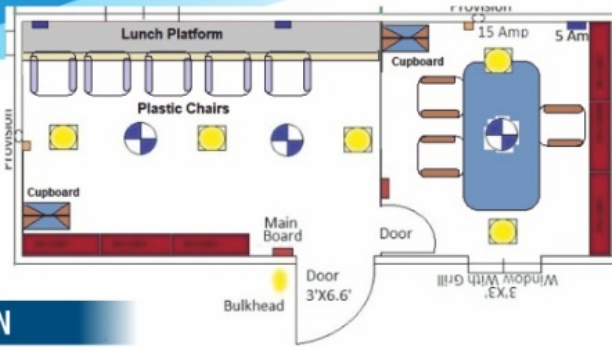
We are the Key Players in Innovation and Trends of Porta Cabin Specification which is Generally Followed By other Porta Cabin Company of Pan India



RELIABLE CABIN

Client List





STANDARD SIZE

| Sr. No. | Standard Size | Sq Ft |
|---------|---------------|-------|
| 1 | 20'x8'x8'.6" | 160 |
| 2 | 20'x10'x8'.6" | 200 |
| 3 | 25'x10'x8'.6" | 250 |
| 4 | 30'x10'x8'.6" | 300 |
| 5 | 40'x10'x8'.6" | 400 |

STANDARD FEATURES

| Sr. No. | Contents | Qty. | | |
|---------------------------|--|-------------|-------------|-------------|
| | | 20 ft | 30 ft | 40 ft |
| 1 | Provision for Window / Split A/c | 1 | 2 | 2 |
| 2 | 3'x3' Sliding Window | 2 | 4 | 5 |
| 3 | 6'1/2"x3' Doors | 1 | 1 | 1 |
| 4 | Paneling on all sides (Including Ceiling) of Decorative Laminated Particle Board | As Per Size | As Per Size | As Per Size |
| Electrical Fitting | | | | |
| 5 | LED Lights | 4 | 5 | 6 |
| 6 | Fan | 3 | 4 | 5 |
| 7 | Telephone Points | - | - | - |
| 8 | External Bulk Head Light | 1 | 1 | 1 |
| 9 | MCB | 1 | 1 | 1 |
| 10 | 15 Amp Switch | 1 | 2 | 2 |
| 11 | 5 Amp Switch | 3 | 4 | 5 |
| 12 | Electrical Switch Boards Inside | 1 | 2 | 2 |
| 13 | Main Switch Outside the Container | 1 | 1 | 1 |
| 14 | Wall to Wall Vinyl Flooring | As Per Size | As Per Size | As Per Size |

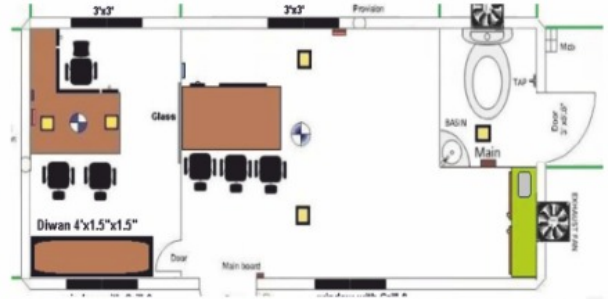
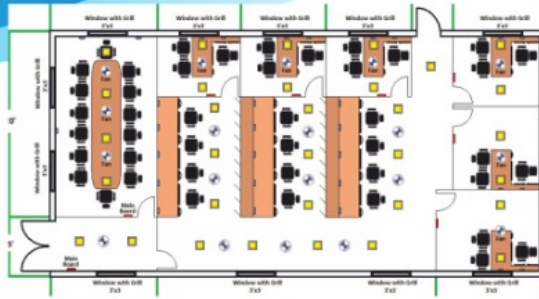
SITE OFFICE CABIN

EXTERIOR



INTERIOR





ACP PREMIUM OFFICE CABIN

EXTERIOR



INTERIOR



STANDARD SIZE

| Sr. No. | Standard Size | Sq Ft |
|---------|---------------|-------|
| 1 | 20'x8'x8'.6" | 160 |
| 2 | 20'x10'x8'.6" | 200 |
| 3 | 25'x10'x8'.6" | 250 |
| 4 | 30'x10'x8'.6" | 300 |
| 5 | 40'x10'x8'.6" | 400 |

STANDARD FEATURES

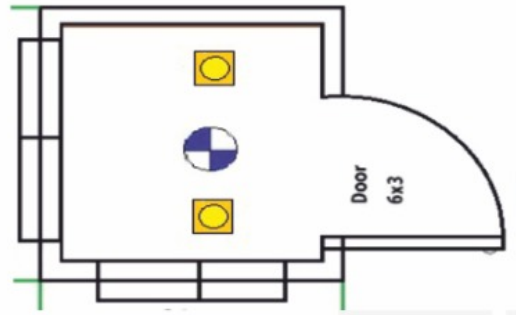
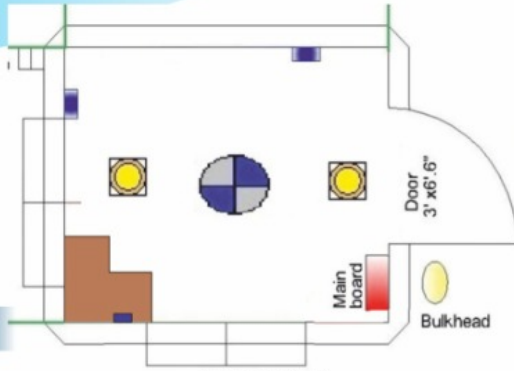
| Sr. No. | Contents | Qty. | | |
|---------------------------|--|-------------|-------------|-------------|
| | | 20 ft | 30 ft | 40 ft |
| 1 | Provision for Window / Split A/c | 1 | 2 | 2 |
| 2 | 3'x3' Sliding Window | 2 | 4 | 5 |
| 3 | 6'1/2"x3' Doors | 1 | 1 | 1 |
| 4 | Paneling on all sides (Including Ceiling) of Decorative Laminated Particle Board | As Per Size | As Per Size | As Per Size |
| Electrical Fitting | | | | |
| 5 | LED Lights | 4 | 5 | 6 |
| 6 | Fan | 3 | 4 | 5 |
| 7 | Telephone Points | - | - | - |
| 8 | External Bulk Head Light | 1 | 1 | 1 |
| 9 | MCB | 1 | 1 | 1 |
| 10 | 15 Amp Switch | 1 | 2 | 2 |
| 11 | 5 Amp Switch | 3 | 4 | 5 |
| 12 | Electrical Switch Boards Inside | 1 | 2 | 2 |
| 13 | Main Switch Outside the Container | 1 | 1 | 1 |
| 14 | Wall to Wall Vinyl Flooring | As Per Size | As Per Size | As Per Size |

SECURITY CABINS

EXTERIOR



INTERIOR

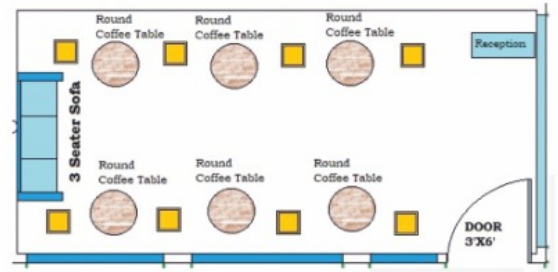
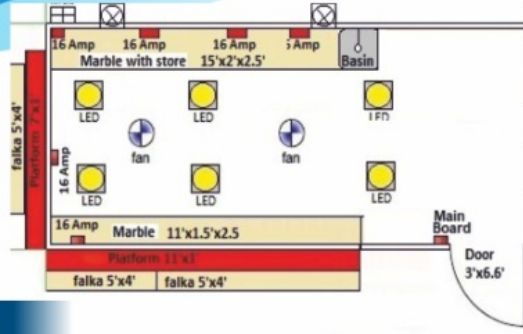


STANDARD SIZE

| Sr. No. | Standard Size | Sq Ft |
|---------|---------------|-------|
| 1 | 4'x4'x8'.6" | 16 |
| 2 | 6'x4'x8'.6" | 24 |
| 3 | 6'x6'x8'.6" | 36 |
| 4 | 8'x8'x8'.6" | 64 |
| 5 | 10'x10'x8'.6" | 100 |

STANDARD FEATURES

| Sr. No. | Contents | Qty. | | |
|---------------------------|--|----------------|-------------|-------------|
| | | 4'x4' or 5'x4' | 8'x8' | 10'x10' |
| 1 | 3'x3' Sliding Window | 2 | 2 | 2 |
| 2 | 6'1/2x3' Doors | 1 | 1 | 1 |
| 3 | Paneling on all sides (Including Ceiling) of Decorative Laminated Particle Board | As Per Size | As Per Size | As Per Size |
| Electrical Fitting | | | | |
| 4 | LED Lights | 1 | 2 | 2 |
| 5 | Fan | 1 | 1 | 1 |
| 6 | Telephone Points | - | - | - |
| 7 | External Bulk Head Light | 1 | 1 | 1 |
| 8 | MCB | 1 | 1 | 1 |
| 9 | 15 Amp Switch | 1 | 1 | 1 |
| 10 | 5 Amp Switch | 1 | 2 | 2 |
| 11 | Electrical Switch Boards Inside | 1 | 1 | 1 |
| 12 | Main Switch Outside the Container | 1 | 1 | 1 |
| 13 | Wall to Wall Vinyl Flooring | As Per Size | As Per Size | As Per Size |



CAFÉ & SHOP CABIN

EXTERIOR



INTERIOR



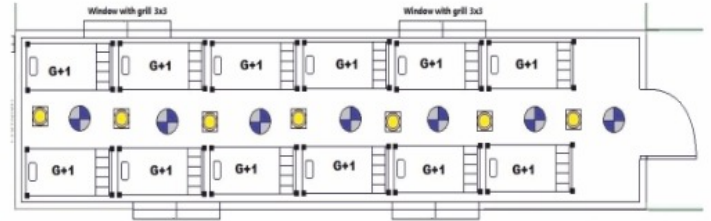
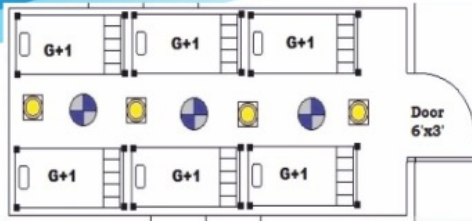
STANDARD SIZE

| Sr. No. | Standard Size | Sq Ft |
|---------|---------------|-------|
| 1 | 20'x8'x8'.6" | 160 |
| 2 | 20'x10'x8'.6" | 200 |
| 3 | 25'x10'x8'.6" | 250 |
| 4 | 30'x10'x8'.6" | 300 |
| 5 | 40'x10'x8'.6" | 400 |

STANDARD FEATURES

| Sr. No. | Contents | Qty. | | |
|---------------------------|--|-------------|-------------|-------------|
| | | 20 ft | 30 ft | 40 ft |
| 1 | Provision for Window / Split A/c | 1 | 2 | 2 |
| 2 | 3'x3' Sliding Window | 2 | 4 | 5 |
| 3 | 6'1/2"x3' Doors | 1 | 1 | 1 |
| 4 | Paneling on all sides (Including Ceiling) of Decorative Laminated Particle Board | As Per Size | As Per Size | As Per Size |
| Electrical Fitting | | | | |
| 5 | LED Lights | 4 | 5 | 6 |
| 6 | Fan | 3 | 4 | 5 |
| 7 | Telephone Points | - | - | - |
| 8 | External Bulk Head Light | 1 | 1 | 1 |
| 9 | MCB | 1 | 1 | 1 |
| 10 | 15 Amp Switch | 1 | 2 | 2 |
| 11 | 5 Amp Switch | 3 | 4 | 5 |
| 12 | Electrical Switch Boards Inside | 1 | 2 | 2 |
| 13 | Main Switch Outside the Container | 1 | 1 | 1 |
| 14 | Wall to Wall Vinyl Flooring | As Per Size | As Per Size | As Per Size |





BUNK HOUSE CABIN

EXTERIOR



INTERIOR



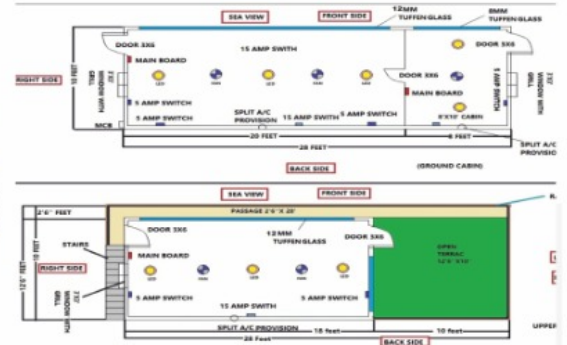
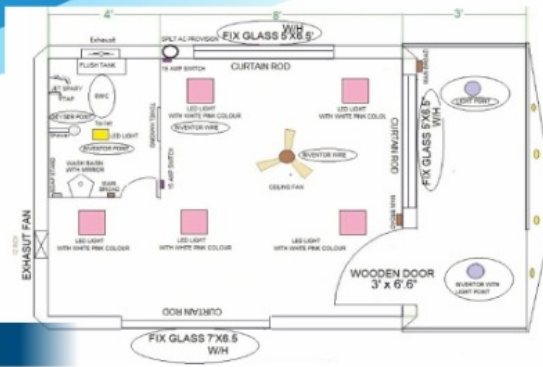
STANDARD SIZE

| Sr. No. | Standard Size | Sq Ft |
|---------|---------------|-------|
| 1 | 20'x8'x8'.6" | 160 |
| 2 | 20'x10'x8'.6" | 200 |
| 3 | 25'x10'x8'.6" | 250 |
| 4 | 30'x10'x8'.6" | 300 |
| 5 | 40'x10'x8'.6" | 400 |

STANDARD FEATURES

| Sr. No. | Contents | Qty. | | |
|---------------------------|--|-------------|-------------|-------------|
| | | 20 ft | 30 ft | 40 ft |
| 1 | Provision for Window / Split A/c | 1 | 2 | 2 |
| 2 | 3'x3' Sliding Window | 2 | 4 | 5 |
| 3 | 6'1/2"x3' Doors | 1 | 1 | 1 |
| 4 | Paneling on all sides (Including Ceiling) of Decorative Laminated Particle Board | As Per Size | As Per Size | As Per Size |
| Electrical Fitting | | | | |
| 5 | LED Lights | 4 | 5 | 6 |
| 6 | Fan | 3 | 4 | 5 |
| 7 | Telephone Points | - | - | - |
| 8 | External Bulk Head Light | 1 | 1 | 1 |
| 9 | MCB | 1 | 1 | 1 |
| 10 | 15 Amp Switch | 1 | 2 | 2 |
| 11 | 5 Amp Switch | 3 | 4 | 5 |
| 12 | Electrical Switch Boards Inside | 1 | 2 | 2 |
| 13 | Main Switch Outside the Container | 1 | 1 | 1 |
| 14 | Wall to Wall Vinyl Flooring | As Per Size | As Per Size | As Per Size |

FARM HOUSE CABIN



EXTERIOR



INTERIOR

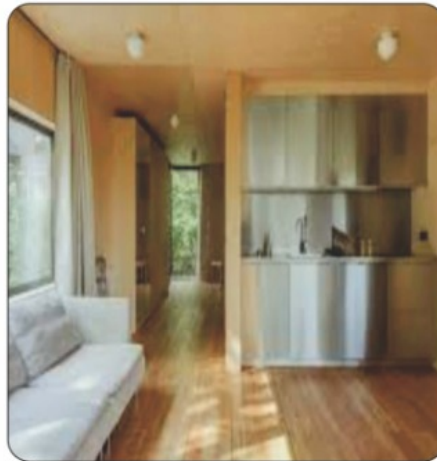


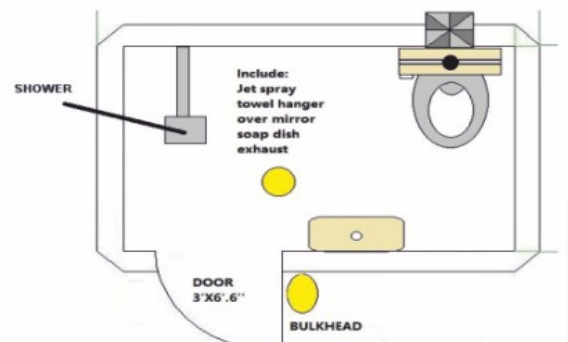
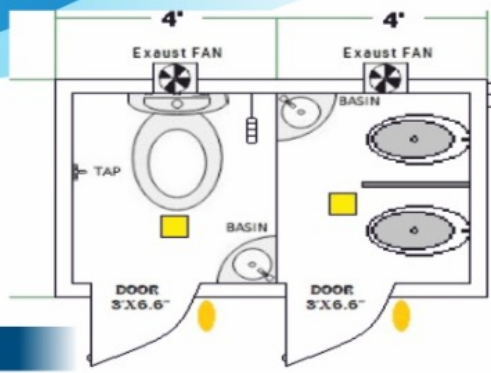
STANDARD SIZE

| Sr. No. | Standard Size | Sq Ft |
|---------|---------------|-------|
| 1 | 20'x8'x8'.6" | 160 |
| 2 | 20'x10'x8'.6" | 200 |
| 3 | 25'x10'x8'.6" | 250 |
| 4 | 30'x10'x8'.6" | 300 |
| 5 | 40'x10'x8'.6" | 400 |

STANDARD FEATURES

| Sr. No. | Contents | Qty. | | |
|---------------------------|--|-------------|-------------|-------------|
| | | 20 ft | 30 ft | 40 ft |
| 1 | Provision for Window / Split A/c | 1 | 2 | 2 |
| 2 | 3'x3' Sliding Window | 2 | 4 | 5 |
| 3 | 6'1/2"x3' Doors | 1 | 1 | 1 |
| 4 | Paneling on all sides (Including Ceiling) of Decorative Laminated Particle Board | As Per Size | As Per Size | As Per Size |
| Electrical Fitting | | | | |
| 5 | LED Lights | 4 | 5 | 6 |
| 6 | Fan | 3 | 4 | 5 |
| 7 | Telephone Points | - | - | - |
| 8 | External Bulk Head Light | 1 | 1 | 1 |
| 9 | MCB | 1 | 1 | 1 |
| 10 | 15 Amp Switch | 1 | 2 | 2 |
| 11 | 5 Amp Switch | 3 | 4 | 5 |
| 12 | Electrical Switch Boards Inside | 1 | 2 | 2 |
| 13 | Main Switch Outside the Container | 1 | 1 | 1 |
| 14 | Wall to Wall Vinyl Flooring | As Per Size | As Per Size | As Per Size |





STANDARD SIZE

TOILET CABIN

EXTERIOR



INTERIOR



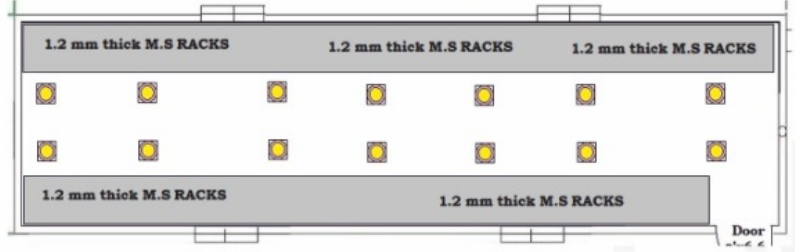
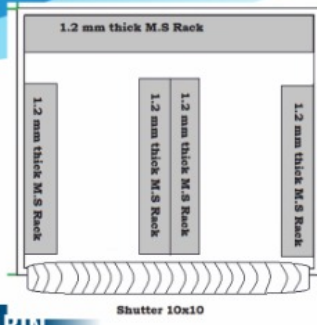
| Sr. No. | Standard Size | Sq Ft |
|---------|---------------|-------|
| 1 | 4'x4'x8'.6" | 16 |
| 2 | 6'x4'x8'.6" | 24 |
| 3 | 6'x6'x8'.6" | 36 |
| 4 | 8'x8'x8'.6" | 64 |
| 5 | 10'x10'x8'.6" | 100 |

STANDARD FEATURES



| Sr. No. | Contents | Qty. | | | |
|---------|--|--------------------|-------------|-------------|-------------|
| | | 4'x4' or 6'x4' | 6'x6' | 8'x8' | 10'x10' |
| 1 | EWC Western Toilet | As Per Requirement | | | |
| 2 | Urinal | As Per Requirement | | | |
| 3 | Shower Area | As Per Requirement | | | |
| 4 | 6' x 2' Doors (Main) | 1 | 1 | 1 | 1 |
| 5 | 5' x 2' Doors (Internal) | - | - | - | - |
| 6 | Partition (Internal) | - | - | 1 | 1 |
| 7 | Wash Basin | 1 | 1 | 1 | 1 |
| 8 | LED Lights | 1 | 1 | 2 | 2 |
| 9 | Exhaust Fan | 1 | 1 | 1 | 2 |
| 10 | External Bulk Head Light | 1 | 1 | 1 | 1 |
| 11 | MCB | 1 | 1 | 1 | 1 |
| 12 | Electrical Switch Boards Inside | 1 | 1 | 1 | 1 |
| 13 | Wall to Wall Vinyl Flooring or Aluminum Checker Tiles | As Per Size | As Per Size | As Per Size | As Per Size |
| 14 | Paneling on all sides (Including Ceiling) of Decorative Laminated Particle Board | As Per Size | As Per Size | As Per Size | As Per Size |





PORTABLE STORAGE CABIN



FRP SECURITY & TOILET CABIN



SPECIFICATION

The Main Structural & Other Specification of Cabin **Our cabins come with Over Roof Waterproofing Provision** **(THE First PORTA CABIN COMPANY to come up with this Provision)**

Base Frame

1. Bottom Frame 100mm x 50mm 'C' channel - 30'x10' & 40'x10' 30'x12' 40'x12'
2. Bottom Frame 100mm x 50mm I Beam - 10'x8' & 10'x10' 20'x8' & 20'x10'
3. Stiffener Bottom 100mm x 50mm I Beam

Side and End Walls

1. Paneling Outside Specially with GI Sheets (Galvanized Sheets of Essar & Equivalent).
2. Internal Wall Paneling ACP (Aluminum Composite Panel) / 8 mm MDF (Prelaminated Board).
(Fire Retardant, Water Resistant & up to 5 Years Manufacturer's warranty)
3. All steel sheets used are tested for corrosion resistance.
4. All Gaps are Sealed at Edges and Bottoms to avoid Insurgence of Moisture and Water Particle

Flooring System

1. Bottom flooring 18mm Cement Fiber Board (fixed by means of self tapping screws.)
2. Vinyl Carpet Glued with Proper Fevicol Sr 505 onto the panel.

Roof

1. Roof Outside Specially (Galvanized Sheet) Properly Sloped and water tight.
2. False Ceiling ACP Sheet (Aluminum Composite Panel) / 8 mm MDF (Prelaminated Board).

Paint

1. Our Product undergoes a series of Process Right from Vinegar Treatment to avoid White Rust of GI Sheets followed by Coat of Etching Primer and Epoxy Zinc Grey Primer and finally A Coat of Epoxy/PU paint is Given to Give Robust First Line of Defense to Our Product.

Insulation

1. Insulation is Done of Glass Wool/Rock Wool of Optimum Density and also as Per desired Insulation Product.

Main Entry Door

1. Door closure on main Door with locking agreement.

Aluminum Windows

1. Aluminum Windows of Sliding shutter comes with One Way Vision Glass panes and Mosquito net and Safety Grill. The Aluminum sections can be powdered coated or Anodised as per desire.

Electrical Systems and Wiring (All Wires of Polycab / Havells or Equivalent)

1. All Electrical fittings in the Portable Cabin shall be with capacity of 220-240 V, AC 50Hz. Philips / Panasonic Led Panel Light, Door Light (Bulkhead), Lazer / GM Cabin Fan, ANCHOR Switches, Sockets, Air Conditioners Point (32 amps capacity MCB) (All Type of Air Conditioning Systems as desired upon can be installed). Electrical fittings brands WILL BE AVAILABLE AS DESIRED. Earthing Point shall be provided for SAFETY.

"Our Motto-Business with Ethics and
Morale Prevails Anywhere And Anytime"



RC RELIABLE CABIN

Tried, Tested & Trusted

MANUFACTURERS OF PORTABLE & CUSTOMIZE CABIN

-  **Office** : Shop No. 2, Dhananjay Purav House, Chendani Koliwada, R.S. Road, Thane (W) - 400 601, MAHARASHTRA (INDIA).
-  **Corporate Add** : Omega Business Park, Unit No. 208, 2nd Floor, Plot No. A - 271 & A - 298, Road No. 33, Wagle Estate, MIDC, Thane - (W) 400 604. MAHARASHTRA
-  **Mfg. Unit.** : Survey No. 49 /1, 48 /2 , Village - Pimpri , Mumbra - Panvel Road, Thane 400 612 Maharashtra
-  **E-mail** : reliablecabin@gmail.com
-  **Web.** : www.reliablecabins.in / www.reliablecabins.com
-  **Contact** : **8652229412 / 9594061892 / 9930159839**

